

Our Vision: Home With A Heart

Our Mission: Building a safe, inclusive, sustainable and vibrant Town



This newsletter is environmentally printed on paper produced by EMAS certified mill.

HIDDEN GEMS

Nee Soon's Best Kept Secrets

See pg 2 and 3



Lights Up

Dazzling lights adorn our town for Chinese New Year

Pg 4 - 5



#FacesOfNeeSoon

Young hawker defies stereotype and soars with specialty wings

Pg 8 - 9



Leading the Way Home

Our dementia-friendly estate pioneers the way to kindness

Pg 10



MP for the People

Assoc Prof Faishal gives insight into his 10-year journey in Nee Soon

Pg 15 - 16

Can't travel overseas? Don't let that get you down! Our little town has so much to offer when you are planning a fun day out. We have explored every nook and cranny of Nee Soon in search of interesting spots – whether you are a nature lover, someone who enjoys food, or just looking for adventure, you will love this easy-to-digest guide we have put together for you!



CHONG PANG



Sembawang Hot Spring

Visit Sembawang Hot Spring Park for a unique experience. Soak your feet in the balmy 40-degree hot spring water at the outdoor foot bath. You can also boil eggs at the egg station, explore the preserved landscape, rest under the gigantic Banyan tree or enjoy a leisurely lunch at the café.

NEE SOON EAST



Oasis Waterpark

With three main play areas featuring water sprays and buckets, a shallow pool and giant board games, Oasis Waterpark offers a welcome respite from the heat for everyone.

NEE SOON CENTRAL



Northpoint City

With more than 400 local and international retail brands, this bustling mall is both a retail and dining paradise. Residents can also enrol for fitness, dance and language courses at Nee Soon Central Community Club (CC), the first CC in a mall.

NEE SOON LINK



Yishun Dam

With plenty of green spaces, there are many great sites for a picnic or just to catch the sunset. It is also a hotspot for freshwater fishing. Look further out to the east and you can even see Singapore's last fishing village.

NEE SOON SOUTH



HomeTeamNS Khatib

Gear up for a day of adventure at the 2,800 sqm Adventure HQ – Singapore's first and largest multi-installation indoor adventure centre. Among its adventure installations are Singapore's longest indoor slide and biggest two-tiered, 16-element indoor challenge ropes course. Families with children can also enjoy an unforgettable audio, visual and sensory experience at the Peranakan themed indoor playground.



Chong Pang City Wet Market & Food Centre

Always bustling with activities, Chong Pang City is a great place to take in the sights and sounds of the heartland. Visit the vibrant street bazaars and have a hearty meal of local fare.



Khatib Bongsu

Sungei Khatib Bongsu is one of Singapore's last undammed rivers. Explore the 7.5 km mangroves by kayak and check out the rich diversity of plant and animal species that live there. Suitable for beginners and families with kids above 4 years old.



SAFRA Yishun

Bowl in style with cosmic bowling and groove to the music while you wait for your turn to knock some pins down.



Yishun Mall

Come soak in the warm and friendly atmosphere at this communal shopping space for residents. From getting a haircut to a quick grocery run, this is a great location to get your errands done.



ORTO

Get away from the hustle and bustle of the city and get close to nature at ORTO. A short walk from Khatib MRT, ORTO has everything you need to have a fun-filled day with family and friends. Relive the kampung experience by going *longkang* (drain) fishing or opt for something more active, such as paintball or go-karting. The Live Turtle and Tortoise Museum is also a hit among families.



Hock Huat Keng Temple

It is not often that you see a Taoist and Hindu temple housed under the same roof. Co-existing in harmony, it is a good representation of the inclusive community in Nee Soon.



Yishun Park Hawker Centre

Home to a community of old and new generation hawkers, this hawker centre offers a wide range of well-loved local delights, as well as modern and fusion cuisines.



FutsalArena

Get onto the field for a futsal session with your buddies or shoot some hoops at one of the three basketball courts available. Open till 1am daily, FutsalArena is the go-to place for some late night sports with friends.



Lower Seletar Reservoir Park

Located near Seletar Airbase, this is an excellent location for plane spotting. Another popular attraction in the park is the water play area, which features a wading stream, a central fountain area and two water spouts. Sports enthusiasts can try dragon boating or kayaking down the beautiful waters of the reservoir.



Chencharu Link

Visit Nanyang Trading Aquarium, the biggest aquarium fish farm in Singapore, and take an educational tour of more than 500 tanks of fishes on display.



Bah Soon Pah Road

Planning to be a plant parent? The nurseries along Bah Soon Pah Road are great places to start your green journey. If you are lucky, the workers in the nursery might let you in on some plant-growing secrets!



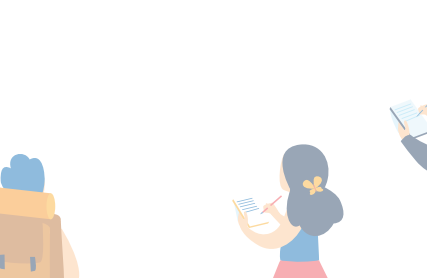
Tzu Chi Humanistic Youth Centre

Enjoy the beautiful view of idyllic Yishun Pond from Jing Si Books and Café. The glass walls allow natural light into the café, creating a warm and cosy ambience for all to enjoy. Youths can take part in programmes designed to help them develop interests, and hone their talents through exploration and discovery.



Jing Si Books and Café

Enjoy the beautiful view of idyllic Yishun Pond from Jing Si Books and Café. The glass walls allow natural light into the café, creating a warm and cosy ambience for all to enjoy. Youths can take part in programmes designed to help them develop interests, and hone their talents through exploration and discovery.



Bah Soon Pah Road

Planning to be a plant parent? The nurseries along Bah Soon Pah Road are great places to start your green journey. If you are lucky, the workers in the nursery might let you in on some plant-growing secrets!



Bah Soon Pah Road

Planning to be a plant parent? The nurseries along Bah Soon Pah Road are great places to start your green journey. If you are lucky, the workers in the nursery might let you in on some plant-growing secrets!

CHINESE NEW YEAR

Every division in Nee Soon burst into bright colours in January. Festive lights illuminated our streets and the Chinese New Year. You can snap a picture with the God of Fortune statue — the centrepiece in every division — take a walk around town to soak in the festive mood, or go but every cloud has a silver lining. For this festive period, it means that we can, in

CHONG PANG



NEE SOON EAST



NEE SOON CENTRAL



LIGHT UP CEREMONY

New Year spirit filled the air. While celebrations this year are slightly subdued, there is still plenty to see and do in Nee Soon. shopping for Chinese New Year goodies at our town centres. Chinese New Year may be celebrated differently this year with COVID-19 restrictions in place. our small group, spend quality time and have nice, long reunion meals with our loved ones.

RAL

NEE SOON LINK

NEE SOON SOUTH



Happy

Man KC
I wish for a safe, healthy and happy 2021. New year, new perspective, new direction, new dream and new joy from both life and work. An exciting fresh start to our new beginning.
Liked and shared.
Tiffany Chew Amanda Lee Esther Lee

Sachel Wong
My wish for 2021 is for my family to be healthy and happy, days filled with blessings and laughter!
IG: @themomad
Neo Alice, Jaa Ong, Nelson Berger

Cass Chew
Cheers to a Toastful Fruitful 2021
With increases in Jobs and Work Productivity for Everyone
With Less Sickness but
Good Health to Everyone!
Liked shared
Pined
Lim Lim
Lee Hwe Kim
See Sp

Graysen Wong
Happy New Year! 🍀
Best wishes to everyone for a bright and safe 2021 🍀
Liked and shared
Carissa Eu
Angie Joe
Roger Wong

Daisy Love
My 2021 wishes is everything back to normal with free from Covid 19 and face mask. All the peoples around the world, my friends and my families stay safe and healthy always. 🍀🍀🍀
Liked and Shared this post 🍀
IG: @daisylove 3980
Tagging See Lay Kame Pinky Phe Eugenia Sin Serene Kee Yoke Sue Chaw
#HomeWithHeart

Silas Jh Chang
Wishing all a happy 2021... remember it's never "too old to want" (2021) and implement positive changes in your life and those around you. Do things with a heart.
#HomeWithHeart
IG: silas.makleworker
Josephine Ho Wee Ling Tan Alice Jun

Sharon Ng
Liked FB AIG and shared
Wishing all Happy 2021, good health and good wealth 🍀
Liked and shared
Jamie Chin Cindy Teo Seng Mee April Tan

Adele Chew
I wish for good health and great lives to my family and friends in 2021. Spend many years together on our life long journeys 🍀
Liked and shared
Gino KD Olivia Chan Blent Lee

Vivien Lau
Happy new year, Hope no more covid 19 virus.
Nancy Ching
Carol Ng
Ren Jie Chen

New year

Yan Xing
I wish everyone will be happy for the next year Nelson Lun Ivy Tan Kenneth Lun

Ng Kai Hui
Wish that the Covid-19 pandemic will finally be under control and life would be back to normal soon in 2021 Ng Xin Yi Ng Xin Wei Vanessa Chiang

Iain Tan
My 2021 wish is an awesome year that there will be no more covid and everyone enjoys a brand new year ahead! Kiasia Yew Scott Tan Andy Voon Ioi

Sue Zhang
Cheers
A Warm Welcome To 2021 with Love Caring Joy for Everyone and No more Viruses Please..
Liked shared
Mei Ching Chew
Jonh Teng
Too Kees
Pined Sent

Welking Tan
2020 has been challenging for all of us. May 2021 be a better year for All
#HomeWithHeart
Joanne Ye Josephine Ho Alice Jun

Jae Mei Kang
It had been a tough year for everyone with the pandemic. Hoping Year 2021 will be a year filled with peace & happiness and the Covid will be over soon. Stay safe!
Anzhelin Tan
Imelda Harrold... See More

Ryel Lim
Thanks for the awesome giveaway by Nee Soon Town Council!
Year 2020 has not been a good year but we can be optimistic and look forward to a better year 2021! It will definitely be a marvelous, fantastic year ahead! Wishing all be spurred on, wider job opportunities, better health and closer family relationship!
Adeline Tan HX Aurora Tan Celestia Qiel 🍀🍀🍀
IG: ryellim

Charles Koh
Wishing year 2021 to be more healthier, resilient, peaceful and lots of happiness!
Hilala Dine Lim Wee Bing Tan

2021



APPRECIATING OUR TOWN COUNCIL CLEANERS

Our town council cleaners have dedicated long hours of hard work to keep our town sanitary for residents, even if it means putting themselves at the frontline. An increased need for frequent and targeted cleaning of common spaces, high traffic areas and touch points, as more residents worked from home during the Circuit Breaker period, added to their workload.

Across all five divisions, our MPs led the distribution of goodie bags and cakes to our cleaners during the Christmas period to thank them for their contribution. The goodie bags, which consist of toiletries, masks, dried foods and other necessary daily household items, were prepared by a resident, her family and friends.



Chong Pang – Minister K Shanmugam gives out a goodie bag filled with essential items

In addition, Nee Soon East Community Club collaborated with volunteers from Backalley Barbers, known for their active community work, to give out free haircuts to about 80 cleaners. The cleaners also received handmade appreciation cards from the children at Sunflower Preschool, where the moment was captured through Polaroids. These Polaroids were then given to the children to let them know that their simple acts have made a difference.

Thank you to all our community partners who helped make these events possible. We hope that these gestures will encourage the town council cleaners in the ongoing fight against COVID-19.



Volunteer barbers provide free haircuts while adhering to safe distancing measures



Nee Soon East – Mr Louis Ng poses with a cleaner holding her card for a Polaroid moment



Nee Soon Central – Assoc Prof Muhammad Faishal Ibrahim and a cleaner receiving a goodie bag flash a smile even from behind their masks



Nee Soon Link – Chairman Mr Derrick Goh stands strong with cleaners during the distribution event



Nee Soon South – Ms Carrie Tan honours cleaners during the festive season

"EVERYBODY WORKS TOGETHER TO BRING THE HAWKER CENTRE UP.
WE ARE ALL IN IT TOGETHER." — TAN WEE YANG, AH TAN WINGS (01-40) YISHUN PARK HAWKER CENTRE

新生代小販凭虾酱鸡展翅高飞

WORD OF MOUTH GIVES WING TO NEXT-GENERATION HAWKERPRENEUR



Mr Tan Wee Yang, 28, has come a long way since 2016 when he caused a stir in the local food scene with his unique brand of *har cheong gai*, also known as fried prawn paste chicken. In this section, Wee Yang recounts his journey as a next-generation hawkerpreneur.

Celebrating the Old and New

Har cheong gai is a dish Wee Yang grew up eating. “It’s comfort food for me. My family usually orders it at *zi char* (cook and fry) stalls,” he reminisced. Typically served in sharing portions, Wee Yang was inspired to present his version as a standalone dish.

Wee Yang experimented numerous times before he hit upon the right recipe, which includes long periods of marination and the double-drizzle frying method.

The ultra-crispy wings have a distinct prawn paste flavour that permeates beyond the skin and deep into the tender, juicy meat beneath. For just \$5.20, diners get to enjoy this specialty dish accompanied by flavourful herbed rice, a sunny side up egg, and Wee Yang’s unique spicy cincalok chilli with freshly squeezed tangy lime juice.

Giving his *har cheong gai* a fresh spin but also keeping to well-loved traditional flavours, his food is akin to the surroundings of his stall in Yishun. The Yishun Park Hawker Centre boasts a mix of young and old generation hawkers, making Wee Yang feel right at home.

Heartlanders Lend a Helping Hand

The first year was especially tough for Wee Yang. Many people were skeptical of his *har cheong gai*-centric concept. The “hipster” dishes he introduced to accompany his *har cheong gai* were not well received either.

Wee Yang soon realised that less is more. He streamlined the menu and made numerous tweaks to his recipe based on feedback from patrons. His efforts paid off and his wings quickly gained popularity.

“There was one lady who brought the whole block to my stall. She introduced a different neighbour to my stall every day and the word spread,” he smiled.

He also credits his hawker neighbours, some of whom have over 10 years of experience, for their sharing of knowledge and sense of camaraderie. “Everybody works together to bring the hawker centre up. We are all in it together. If other stalls are dying and only you do well, you won’t do well in the long term,” he shared.

Raising Public Profile of Hawkers

While he has set up a second shop at Timber+ Food Park in Ayer Rajah Crescent, he cites manpower as one of the biggest challenges in the hawker industry.

With our local hawker culture recently inaugurated as one of United Nations Educational, Scientific and Cultural Organization (UNESCO’s) intangible cultural heritage, Wee Yang is hopeful for the future.

“Perception of hawkers will change. People will look up and respect hawkers more, which is a good thing overall. This especially holds true for younger people who want to join the industry,” Wee Yang concluded.



陈伟扬（28岁）在2016年, 于义顺公园小贩中心以其自创的炸虾酱鸡秘方异军突起, 在本地餐饮界崭露头角。伟扬与我们分享他踏上新生代小贩行列的心路历程。

新旧融合 别出心裁

伟扬从小就对炸虾酱鸡情有独钟。他回忆说：“虾酱鸡对我来说, 是有疗愈作用的美食。家人出外用餐时, 在煮炒摊常会点这道菜。”这道菜肴因为份量多, 一般必须多人共享, 但伟扬突发奇想, 将其设计成即使一个人用餐, 也可独自享用的佳肴。

经过屡次尝试, 伟扬终研发出自己的独家炸虾酱鸡食谱, 包括长时间腌制鸡肉及分作两次油炸的烹饪法。

伟扬的炸虾酱鸡翅膀外皮酥脆, 其独特、浓厚的虾酱味道更是渗透到鸡肉里。食客花5.20元即可享用炸虾酱鸡翅膀套餐, 包括加入香料的米饭、黄金荷包蛋及搭配鲜榨柠檬汁的自制虾酱辣椒。

为炸虾酱鸡注入新意的同时, 又保留本地传统原味, 也反映了摊位所在的义顺特色。义顺公园小贩中心有一群来自各年龄层的小贩坐镇, 让伟扬有“家”的归属感。

热心居民 口耳相传

伟扬坦言, 首个年头非常难挨。许多人对他“只卖炸虾酱鸡”的饮食概念不以为然。他随炸虾酱鸡推出较新式的配搭菜品, 但反应不好。

伟扬很快就领悟过犹不及的道理, 并简化菜单, 依照食客的反馈多次调整食谱。他的努力终获得肯定, 炸虾酱鸡越来越受欢迎。

他笑说：“摊位附近的组屋区里, 有位女士介绍整座的居民来光顾我, 每天有不同的居民来我的摊位, 口碑就是这样传了开来。”

伟扬也感激其他摊贩与他分享心得, 他们其中好几位有超过10年的经营经验）。他说：“每个人都很努力使小贩中心生意蒸蒸日上。我们都在同一条船上。如果其他摊位生意每况愈下, 只有你的生意好, 长久下来, 你的生意也必定走下坡。”

提升小贩的公众形象

伟扬如今顺利在亚逸拉惹弯的Timber+食阁开第二间摊位, 但坦言人手不足依旧是餐饮界最大的挑战。

随着联合国教科文组织将新加坡的小贩文化列入“非物质文化遗产代表名录”, 伟扬对摊贩前景感到乐观。

他说：“人们对于小贩的形象会改观。他们会更尊重小贩。整体来说, 这个发展趋势是正面的。这为想往餐饮界发展的年轻人打了一剂强心针。”

A SAFER TOWN FOR THE ELDERLY

Residents may have noticed fresh coats of paint and icons on HDB blocks in high traffic areas such as Nee Soon South Community Club and Chong Pang City.

Each colour is linked to an icon – red and pineapple; blue and fish; green and rubber tree. These new dementia-friendly features will make it easier for residents who struggle with memory loss to find their way around the estate and to remember where they live.

Other infrastructural upgrades include clearer signages, more resting places, bigger and more visible block numbers on the sides of blocks and pillars, as well as brightly coloured lift shafts.

These changes were part of the recommendations by Dr Philip Yap, Senior Consultant of the Department of Geriatric Medicine at Khoo Teck Puat Hospital (KTPH) and his team of experts. “The features are intended to compensate for the physical and cognitive deficits that people with dementia may have,” shared Dr Yap.

A collaboration between Nee Soon South Grassroots Organisations, the Agency for Integrated Care, Nee Soon Town Council, KTPH and the GoodLife! @ Yishun, this project aims to provide a more inclusive and supportive environment for dementia residents and their caregivers.

As the first ‘dementia-friendly’ town in Singapore, Nee Soon also offers other services and features, such as ‘Dementia Go-To Points’, to make the community a friendlier place for dementia residents.

BANDAR YANG LEBIH SELAMAT UNTUK WARGA EMAS

Para penduduk mungkin telah menyedari bahawa blok-blok HDB di kawasan lalu lintas yang sibuk seperti Kelab Masyarakat Nee Soon South dan Chong Pang City mempunyai lapisan cat dan ikon yang baru.

Setiap warna dikaitkan dengan satu ikon – merah dan nanas; biru dan ikan; hijau dan pokok getah. Ciri-ciri mesra demensia yang baharu ini akan memudahkan penduduk yang mengalami kesulitan kerana hilang ingatan untuk mencari jalan di sekitar estet dan untuk mengingat di mana mereka tinggal.

Peningkatan infrastruktur yang lain termasuk papan tanda yang lebih jelas, lebih banyak tempat berehat, nombor blok yang lebih besar dan jelas di sisi blok dan tiang blok, serta ruang lif yang lebih terang juga warnanya.

Perubahan ini merupakan sebahagian daripada cadangan Dr Philip Yap, seorang perunding kanan di Jabatan Perubatan Geriatrik di Hospital Khoo Teck Puat (KTPH), dan sekumpulan pakar pasukannya. “Ciri-ciri ini bertujuan untuk menebus kekurangan fizikal dan kognitif yang mungkin dialami oleh pesakit demensia,” Dr Yap berkongsi.

Projek ini merupakan hasil kerjasama antara Pertubuhan Akar Umbi Nee Soon South, Agensi Penjagaan Bersepadu, Majlis Perbandaran Nee Soon, KTPH dan GoodLife! @ Yishun. Ia bertujuan menyediakan satu persekitaran yang lebih inklusif dan menyokong bagi pesakit demensia dan pengasuh mereka.



The green icon and large block number help older folks navigate the marketplace



Directional signage on pillars along a covered walkway



Different-coloured directional signages and more resting places

Sebagai bandar ‘mesra demensia’ yang pertama di Singapura, Nee Soon juga menawarkan perkhidmatan dan ciri-ciri yang lain seperti ‘Dementia Go-To Points’ untuk menjadikan komuniti tersebut lebih mesra bagi pesakit demensia.

亲乐龄市镇

居民也许注意到，一些热闹的地点如义顺南民众俱乐部与忠邦城的政府组屋，最近添上新漆及标上不同图案。

每种图案以不同颜色呈现，红色与黄梨搭配、蓝色与鱼搭配、绿色与橡胶树搭配。这些崭新的亲失智症患者设计，将提升辨识度，让记忆力下降的居民更容易在社区走动，并记得他们所居住的环境。

其他相关的基础改善工程包括更清晰的告示牌、更多休息站，以及在组屋及柱子旁，以和电梯井外墙有更大更清楚的大牌号码。

这些都是邱德拔医院老年科叶仁杰高级顾问医生和他的专家团队的部分建议。叶医生分享说：“这些设计可以弥补失智症患者所经历的生理及心理障碍。”

这项由义顺南基层组织、护联中心、义顺市镇理事会、邱德拔医院及快乐中心联手合作的改善计划，致力于为失智症患者及看护者打造一个更包容的环境，让他们生活得更惬意。

义顺作为新加坡第一个“亲失智症患者”的市镇，也提供其他服务和新措施，如“走失聚点”等，让患者能感受社区友善的关怀。

முதியோருக்குப் பாதுகாப்பான நகரம்

மக்கள் நடமாட்டம் அதிகமாக உள்ள நீ தூன் சவுத் சமூக மன்றம், சொங் பாங் சிட்டி போன்ற இடங்களில் வீடமைப்பு வளர்ச்சிக் கழக அடுக்குமாடிக் கட்டிடங்களில் புதிய சாயத்தையும் சின்னங்களையும் குடியிருப்பாளர்கள் கவனித்திருக்கலாம்.

ஒவ்வொரு நிறமும் ஒரு சின்னத்துடன் தொடர்புடையது - சிவப்புடன் அன்னாசிப்பழம்; நீலத்துடன் மீன்; பச்சையுடன் ரப்பர் மரம். மறதி நோயுள்ள குடியிருப்பாளர்கள் குடியிருப்பு நகரில் தங்கள் வழிகளை அறியவும், தங்கள் வசிப்பிடத்தை நினைவில் கொள்ளவும் “டிமென்ஷியா நோய்க்கு உகந்த” இப்புதிய அம்சங்கள் துணை புரியும்.

தெளிவான வழிகாட்டிக் குறியீடுகள், அதிகமான ஓய்விடங்கள், கட்டிடங்களின் பக்கவாட்டிலும் தூண்களிலும் பெரிதாக எழுதப்பட்ட கட்டிட எண்கள், பளிச்சிடும் நிறத்திலான மின்தூக்கிக் கூண்டுகள் போன்றவை மற்ற மேம்பாடுகளில் உள்ளடங்கும்.

கூ டெக் புவாட் மருத்துவமனையின் மூப்பியல் மருத்துவப் பிரிவில் மூத்த ஆலோசகராக இருக்கும் டாக்டர் பிலிப் யாப், அவரது நிபுணர் குழுவினர் செய்த பரிந்துரைகளின் ஒரு பகுதியாக இந்த மாற்றங்கள் செய்யப்பட்டன. “டிமென்ஷியா உள்ளவர்களின் உடலியல், புலனுணர்வுக் குறைபாடுகளை இந்த அம்சங்கள் ஈடுசெய்யும்,” என்றார் டாக்டர் யாப்.

நீ தூன் சவுத் அடித்தள அமைப்புகள், ஒருங்கிணைந்த பராமரிப்பு அமைப்பு, நீ தூன் நகர மன்றம், கூ டெக் புவாட் மருத்துவமனை, குட்டைப் பட்டை @ யீஷூன் ஆகியவற்றின் இந்தக் கூட்டு முனைப்பு, மறதிநோய் உள்ள வசிப்போருக்கும் அவர்களது பராமரிப்பாளர்களுக்கும் மேலும் ஆதரவான சுற்றுப்புறத்தை அமைத்துக் கொடுப்பதை இலக்காகக் கொண்டுள்ளது.

“டிமென்ஷியா நோய்க்கு உகந்த” சிங்கப்பூரின் முதல் நகரமான நீ தூன், “டிமென்ஷியா முனையங்கள்” போன்ற மற்ற சேவைகளையும் அம்சங்களையும் வழங்கி, மறதிநோய் உள்ளவர்களுக்கு ஆதரவான சமூகத்தை உருவாக்குகிறது.

NEE SOON YOUTH FORGE DRUG-FREE LIFESTYLE

Our Nee Soon Central Youth Network is leading a community driven campaign to promote a drug-free lifestyle.

Launched on 21 January 2021 by Assoc Prof Muhammad Faishal Ibrahim, Member of Parliament for Nee Soon Central, and Mr Hawazi Daipi, Chairman of National Council Against Drug Abuse (NCADA), the Nee Soon Central Anti-Drug Abuse campaign is a collaboration between the Nee Soon Central Youth Network, Central Narcotics Bureau (CNB), and NCADA.

Roping In the Community

As part of this campaign, 25 new ambassadors will run a youth mentoring programme. All grassroots volunteers participating in this mentoring programme will go through a training workshop by CNB before they assume the role of an anti-drug abuse ambassador.

Under this programme, youths will receive guidance and mentorship towards a drug-free lifestyle. They will also hear first-hand accounts of drug use from former addicts, and the negative impact it had on them and their loved ones.

Grassroots leaders and volunteers from the Citizens on Patrol scheme have also joined the campaign. They plan to increase youth outreach efforts – looking out for youths spending time at void decks or parks, and convincing them to join community activities.

This trailblazing campaign gives young people the opportunity to lead and organise activities, instilling in them a greater sense of ownership, responsibility and belonging.

“We hope that by doing this, more people can see that it [is] a good programme, and there will be more ground-up initiatives like this done in other parts of Singapore,” AP Faishal shared.



Assoc Prof Faishal and Mr Hawazi Daipi launch the Anti-Drug Abuse Campaign at Northpoint City



Assoc Prof Faishal shares about the initiative with visitors of Northpoint City



Assoc Prof Faishal and Mr Hawazi Daipi stick “Drug Free Zone” decals at an establishment in the mall

NEW YEAR, NEW SCHOOL SUPPLIES



Students of different levels are overjoyed to receive stationery packs distributed by Minister K Shanmugam

For many working parents, CampusImpact provides peace of mind. The social organisation operates an unusual after school centre at Block 151 Yishun St 11 for young people between the ages of 7 to 17.

At the centre, you will find children reading books, teenagers chatting with each other or lounging in armchairs, tutors helping with schoolwork – all at their own pace. It is no wonder the centre is so popular with young people.

CampusImpact is a place for young people to learn, play and express themselves. For some with family difficulties, it is also an emotional safe haven.

CampusImpact also supports parents through counselling services, parenting talks, workshops and more, helping to resolve conflicts and behavioural issues.

At the start of the new school year, Minister K Shanmugam visited the centre to distribute stationery packs to the students, and to recognise the hard work that the staff had put in to ensure children were cared for, especially during the Circuit Breaker period.

The stationery packs were sponsored by e-learning platform, OneSanta.

8 JAN – 31 DEC 2021

WEDNESDAY SPECIAL

每逢星期三

FOR PIONEER & MERDEKA GENERATION

建国/立国一代

Kopi / Teh / Kopi O / Teh O + 咖啡 / 茶 / 咖啡乌 / 茶乌

9AM – 11AM,
3PM – 5PM

Pioneer
Generation

Merdeka
Generation

Please present Pioneer or Merdeka Generation card during purchase

WEDNESDAY SPECIAL – 50% OFF

一杯 EACH

50%

PARTICIPATING COFFEESHOPS:

- Kimly Coffeeshop**
Block 101 Yishun Avenue 5
#01-55 S760101
- Fu Chan Coffee Shop**
Block 101 Yishun Ave 5
#01-83 S760101
- Epic Haus**
Block 101 Yishun Avenue 5
#01-101 S760101
- Kopi Breweries**
Block 110 Yishun Ring Road
#01-401 S760110
- 156 Eating House**
Block 156 Yishun Street 11
#01-122 S760156

Terms and Conditions:

1. Available only at the participating coffeeshops
2. To present Pioneer Generation or Merdeka Generation card upon purchase
3. Limited to 1 cup per card
4. Available for dine-in only
5. The coffee shop reserves the right to verify the name of person and amends the terms and conditions without prior notice

LAYING THE PATH FOR SPACE SHARING



Delivery is made more convenient now with the new ramp

A multi-agency taskforce led by MP Carrie Tan has put in new infrastructure near Khatib Central's McDonald's, which will enhance the convenience and safety for delivery riders and pedestrians alike.

New additions include more motorcycle lots and a new ramp by the Town Council, which leads directly from the service road to the delivery pick-up waiting area at Block 846 Yishun Ring Road.

"Every time I pass by McDonald's, [food delivery] riders would approach me and say 'MP can you please appeal for me'. When I ask what happened, they'd tell me they got saman (fined) for cycling on the footpath," said Carrie.

Before the ramp was constructed, food delivery riders on bicycles and motorised

I HAVE A VISION OF SINGAPORE BEING A GRACIOUS PATH SHARING SOCIETY. THIS CAN BE DONE WITH THE RIGHT INFRASTRUCTURAL SUPPORT AND MORE IMPORTANTLY, EDUCATION.

– Carrie Tan, MP for Nee Soon GRC

personal mobility devices (PMDs) would have to use the footpaths to access the delivery pick-up window at McDonald's. Their counterparts on motorcycle had also struggled to find a parking lot.

Carrie gathered stakeholders from the Housing Development Board (HDB), Land Transport Authority (LTA), and Town Council to resolve this issue. Now, food delivery riders no longer have to worry about violating the rules, and pedestrians can use the footpath with greater peace of mind.

"I have a vision of Singapore being a gracious path sharing society. This can be done with the right infrastructural support and more importantly, education. I'd like to invite interested residents to provide suggestions or join me in these efforts!" Carrie concluded.

LOW INCOME FAMILIES GET TUITION HELP



Mr Derrick Goh visits students at the Yishun Floral RC

Last September, Nee Soon Link launched a fully funded tuition programme for underprivileged children.

Helmed by Nee Soon Town Council Chairman Mr Derrick Goh, this initiative is open to primary school students living in Nee Soon Link, providing them with additional assistance in their studies regardless of their financial circumstances.

A dedicated online platform allows students to access learning materials at any time. Every Thursday evening, grassroots volunteers at Yishun Flora Residents' Corner (RC) welcome students who need extra guidance or are looking for a conducive learning environment.



A volunteer helps a student with his learning modules

The programme currently benefits 32 students. The brother of a 9-year-old participant had this to say, "My sister has been attending this tuition programme for a month now. I see that her English has improved a lot."

The benefits of this tuition programme extend beyond homework. At these sessions, students socialise with their peers and the volunteers, developing personal skills such as communication and confidence.

One of the volunteers is also a recipient of the Community Food Pack initiative by Food from the Heart and sees the tuition programme as an excellent opportunity to give back to the community. Other than helping the students with their school work, she makes an effort to engage them on a personal level. She hopes that, by doing so, she can build strong friendships with the students and let them know that they can always approach the volunteers at the RC for help.

Numerous community and corporate partners came together to support these students. Classrooms and free Wi-Fi were provided by Yishun Floral RC; laptops were sponsored by DBS Bank; and the online tuition platform was sponsored by 88Tuition. Grassroots volunteers from Nee Soon Link have also given their time to facilitate the weekly tuition programme.

HOW TO TRACETOGETHER?

Residents can better protect themselves and others from COVID-19 with their TraceTogether Tokens. Using Bluetooth signals, the Token can effectively trace cases in our community. While it is not mandatory to bring the Token out, we strongly encourage residents to do so. Contact tracing has never been more seamless!

FAQ

Is my Token working?

Your Token is working if there is a green, blinking light. Its battery should last approximately six months.



What do I do if my Token is not working?

If a red, blinking light appears, your Token is either not working or has low battery. In any of these cases, please call 69736511 or email support@tracetogogether.gov.sg for assistance.



Contact:

6973 6511

or



Email:

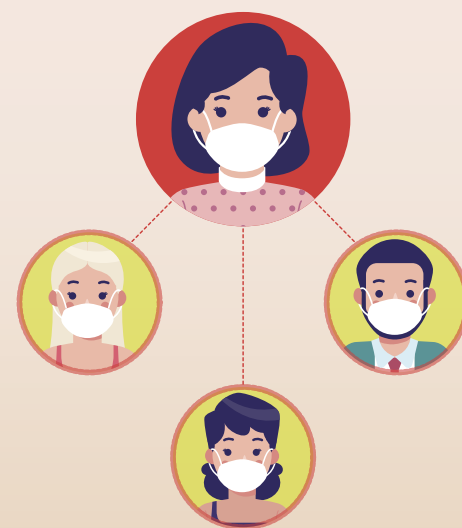
support@tracetogogether.gov.sg



TraceTogether

Will my personal data be compromised through the TraceTogether Token?

No, personal data such as NRIC/FIN and mobile number are encrypted. The Token only records the list of other TraceTogether devices that may be within close proximity through Bluetooth signals.



Ask Jasmine

Dr Jasmine Siang is a licensed behavioural specialist and psychotherapist with more than 12 years of experience in Individuals, Couples and Family Therapy. Her expertise includes abuse, anxiety, eating disorders, relationships, emotional issues, trauma, etc.

She firmly believes change is always possible and healing is an art. It takes time. It takes practice.

It takes trust.

This column is not intended to serve as a substitute for any financial, medical, legal or other professional advice.

If you have specific concerns or an urgent situation in which you require professional, psychological or medical help, you should seek help from a licensed professional, physician or mental health professional.



Dear Jasmine,

I am a full-time working mother with three schoolgoing children. My husband lost his job during the COVID-19 crisis. He has not been successful in his job search and he is starting to lose self-confidence.

While I try to be encouraging and supportive, his unemployment is also starting to take an emotional toll on me. I feel overwhelmed as the sole breadwinner of the family, and the main caregiver of our children. I spent many sleepless nights worrying about our finances.

Before this, we had our retirement plan in place but the crisis has thrown a spanner in the works.

I find myself resenting him for the situation we are in. I feel bad for feeling the way I do. I try to focus on his good qualities, stay positive and hopeful but it gets harder as the situation drags on.

I need advice and help to reframe my thoughts.

Starting to Lose Hope

Dear Starting to Lose Hope,

Reframing your thoughts is not sustainable in your current situation. When your (ideal) thoughts and reality don't match, you will feel a sense of helplessness and hopelessness.

If you can take a step back and look at the picture you have painted – a woman trying very hard to play various roles in the family on her own. She is the cheerleader for her husband and herself; main caregiver of her children; sole breadwinner; and future planner.

You have been playing these roles silently and that makes you feel alone, unsupported, fearful and resentful at the same time. Sometimes, angry even.

Honest communication with your life partner during a time like this is crucial. Share your feelings with your husband, talk about the struggles together and let each other know there is support where needed.

You and your husband are a team. You need to stop telling yourself the narrative of “only I can” or “he just can't or won't”. Trust that the man you married and the father of your kids will do whatever he can to pull through this, just like you.

Jasmine Siang, Behavioural Specialist/Psychotherapist

Help is always available

For women and sexual assault care:
Association of Women for Action and Research (AWARE): 1800 777 5555

For marital relationships:
Care Corner Counselling Centre: 6353 1180

For mediation and dispute resolution:
Eagles Mediation and Counselling Centre: 6788 8220

For children- and youth-related issues:
WINGS Counselling Centre: 6383 5745

For mental health issues:
Shan You Counselling Centre:
6741 9293 / 6745 9293



Have a concern?
Simply scan this QR code and submit your entry here to be shortlisted.



Join the dots for Nanas and Squish to receive their angbaos!



Sudoku

		1			4		9	
	3			1			2	8
5			9		3	7		
		2	3			8		7
7				5	8	1	6	
1	5		6			2		
4		7			6			
			4		7		1	
8					2			3

Difficulty level: **Easy**

Answer

8	7	2	6	1	9	9	8
9	1	9	2	8	7	6	2
2	8	6	9	8	5	2	1
4	8	2	6	2	9	8	5
6	9	1	8	9	2	4	2
2	9	8	1	4	2	6	9
1	4	7	2	8	6	9	8
8	2	9	5	1	7	4	6
9	6	8	4	8	1	2	7

CHONG PANG



Mr K Shanmugam
Minister for Home Affairs and Minister for Law
MP for Nee Soon GRC
Adviser to Nee Soon Town Council

Meet-the-People Sessions
Address: Blk 107 Yishun Ring Road, #01-207, Singapore 760107
Tel: 6758 3039 | WA: +65 8249 4662
Email: mps@chongpang.org
Operating hours: Tuesdays 7.30pm onwards (except PH & eve of PH)
[f](#) K Shanmugam Sc [i](#) kshanmugam_ [v](#) K Shanmugam

NEE SOON CENTRAL



Assoc Prof Muhammad Faishal Ibrahim
Minister of State for Ministry of Home Affairs and
Ministry of National Development
MP for Nee Soon GRC
Adviser to Nee Soon Town Council

Meet-the-People Sessions
Address: Blk 609 Yishun St 61, #01-235, Singapore 760609
Tel: 6752 2532
Email: MPS.NSC@gmail.com
Operating hours: Mondays 7pm onwards (except PH & eve of PH)
[f](#) muhammad.faishal.ibrahim1 [i](#) muhammadfaishalibrahim

NEE SOON EAST



Mr Louis Ng Kok Kwang
MP for Nee Soon GRC
Adviser to Nee Soon Town Council

Meet-the-People Sessions
Address: Blk 227 Yishun St 21, #01-520, Singapore 760227
Tel: 6755 1946
Email: Louising4nse@gmail.com, nee.soon.east.mps@pap.org.sg
Operating hours: Mondays 7.30pm - 9pm
(first 4 Mondays of the month, except PH & eve of PH)
[f](#) [i](#) louisngkokkwang

NEE SOON LINK



Mr Derrick Goh Soon Hee
MP for Nee Soon GRC
Chairman of Nee Soon Town Council

Meet-the-People Sessions
Address: Blk 408 Yishun Avenue 6, #01-1264, Singapore 760408
Email: derrickgohsh@gmail.com
Operating hours: Mondays 7.30pm - 9.30pm (except PH & eve of PH)
[f](#) [i](#) derrickgohsh

NEE SOON SOUTH



Ms Carrie Tan Huimin
MP for Nee Soon GRC
Vice-Chairman of Nee Soon Town Council

Meet-the-People Sessions
Address: Blk 850 Yishun St 81, #01-94, Singapore 760850
Tel: 6759 3413 | WA: +65 9634 5259
Email: CarrieTanNSS@gmail.com
Operating hours: Mondays 7.30pm - 9.30pm (except PH & eve of PH)
[f](#) CarrieTanCares [i](#) carrietancares

LOCATE US
Yishun
Blk 290 Yishun St 22, S(760290)
Nee Soon Central
Blk 751 Yishun St 72, #01-186, S(760751)
Nee Soon South
Blk 845 Yishun St 81, #02-00, S(760845)
Nee Soon Link
Blk 411 Yishun Ring Rd, #01-1819, S(760411)

EM
Essential Maintenance Service Unit (EMSU)
After office hours: 1800 241 7711
1800 275 5555



Tel: 6758 0129
Email: feedback@nstc.org.sg
[f](#) Nee Soon Town Council
[i](#) neesoontc
[v](#) Nee Soon Town Council
[v](#) NeeSoonITC

CHANGING LIVES IN THE HEART OF NEE SOON 改善义顺中居民的生活

As a third term MP for Nee Soon GRC, Assoc Prof (AP) Muhammad Faishal Ibrahim has journeyed almost 10 years with the residents of Nee Soon.

When asked to share the biggest change in both the landscape and community, AP Faishal's reply was simple: transformation.

Prior to 2011, Nee Soon was not yet a GRC. When AP Faishal first came onboard, Nee Soon Central only had a void deck community club (CC). Today, Nee Soon Central CC, housed in Northpoint City, is Singapore's first CC in a mall. This was a project AP Faishal proposed and, with the support of various ministries and agencies, saw to fruition.

A Modern Kampung

The transformation of Nee Soon Central is driven by the vision to develop Nee Soon into a modern sustainable town that focuses on inclusivity, empowerment and compassion. The addition of many new and upgraded facilities, such as Yishun Integrated Transport Hub and Tzu Chi Humanistic Youth Centre, gave the town a facelift and boosted the kampung spirit in the community.

The CC, with its inclusive facilities catering to people from all walks of life, is a manifestation of this vision. These improvements help residents – regardless of age, lifestyle or circumstances – live better, and keep the kampung spirit in Nee Soon alive.

“Not only can you see the changes, you feel them,” said AP Faishal. During Circuit Breaker, he witnessed residents coming forward to contribute masks, food items, and even services to their fellow residents. “This [kampung] spirit will see us through – in celebration or crisis,” AP Faishal added.

Getting to the Root of Things

AP Faishal's on-the-ground approach, with the help of grassroots leaders, means that issues get resolved quickly and effectively. His system is simple: be active on the ground, stay connected to the people and remove barriers for residents who want to reach him. AP Faishal spends his time outside ministerial work doing ground engagement in Nee Soon. With the pandemic, he has been holding Facebook Live sessions more frequently to address concerns and interact with residents.

A few years back, AP Faishal observed a different crowd at night. It prompted him to start visiting coffeeshops late at night about twice a week. Residents are very welcoming and often invite him to join them at their table. They confide in him about personal issues or neighbour disputes, giving him an opportunity to quickly intervene and resolve issues at early stages.

He emphasises on being sincere and transparent when serving the people. “I want to give my best. Some issues are difficult and I'll tell them it's not easy. It is important to have a common understanding –

that some things are more complex than others,” AP Faishal explained. “We developed trust over time. Trust is not something you can buy; you have to earn it,” he added.

A Nation Starts at Home

Aside from physical projects, AP Faishal is very much invested in people, especially at-risk youths. He cited: “In 2019, about 60 per cent of first-time drug users and arrests were under 30 years old.”

He believes that this issue can be nipped in the bud through strong family development and education. Having served in the Ministry of Education and Ministry of Social and Family Development, his experiences allow him to identify the root cause and take on a more holistic approach in finding long-term solutions.

Beyond national policies, he also focuses on upstream initiatives that can benefit residents directly. With the help of community partners and stakeholders, he has helped introduce and supported prison counselling programmes, anti-drug campaigns such as “Dadah Itu Haram”, and the well-wishers programme, among others.

时光荏苒，连任3届的义顺集选区议员费绍尔副教授，陪伴义顺居民已将近10年了。

当被问及环境与社区最大的改变时，费绍尔副教授直接了当地回答：“是转型发展。”

2011年之前，义顺还不是集选区。当费绍尔副教授第一届上任时，那时义顺中只有建设在组屋底层空间的联络所。今天，位于纳福城的义顺中民众联络所是新加坡第一座建立在购物商场的联络所。这项工程由费绍尔副教授发起，通过许多政府部门及机构的鼎力合作而水到渠成。

摩登甘榜

贯彻义顺中转型发展是乘着包容性、自主性及善心，而这也促成了发展义顺为时尚且持续性发展的市镇愿景。如今增设的许多新颖和提升的设施，例如义顺综合交通枢纽与慈济人文青年中心，已让镇貌焕然一新，加强社区的甘榜精神。

义顺中民众联络所里的包容性设施，符合各界人士的需要，正是愿景的实现。这些基础设施的改善帮助所有居民，不论年龄、生活方式或生活情况，都能享受更好的生活，同时也发扬义顺的甘榜精神。

费绍尔副教授说：“你不只能看见这些变化，还能感受它们。”在我国实施阻断措施期间，他亲眼目睹居民挺身而出，捐赠口罩、食物甚至服务其他居民。他表示：“这股甘榜精神，无论在欢庆时刻还是危难中，将一直陪伴着我们。”



打破砂锅问到底

费绍尔副教授实地考察的处事作风，加上基层领袖的帮助，意味着许多问题都能快速、有效地迎刃而解。他的处事系统简单实用，包括活跃于基层、与居民保持联系和扫除各种沟通障碍，让居民容易联系他。冠病疫情期间，费绍尔副教授更常主持面簿直播，以处理居民的疑虑及与居民沟通。

费绍尔副教授几年前发觉晚间总会有不同的群体在邻里出现。这种现象促使他每个星期2次，夜幕低垂时走访咖啡店。居民们对此举表示欢迎，时常邀他同桌。他们向费绍尔副教授倾诉他们的私人问题，或与邻居的纠纷。费绍尔副教授因为这些契机而更快处理问题，从而在问题变本加厉之前，获得圆满的解决。

费绍尔副教授强调服务居民时，一定要真诚且处事透明。他解释：“我要尽全力。有些事情不容易解决，而我也会坦诚相告。与居民达成共识非常重要，有些事的确是比较复杂。”他补充说道：“我们随着时间的推移，建立了对彼此的信任。你不可能购买信任感；你必须博得信任。”

家园是国家的基础

费绍尔副教授除了专注在实体的工程，也相当关注人为的问题，尤其是高风险青年。他举例说：“在2019年，百分之60的首次嗜毒者及被捕者的年龄低于30岁。”

费绍尔副教授深信这种社会问题可以通过强化家庭发展及教育，从根本上获得解决。通过在教育部和社会及家庭发展部服务的经验，费绍尔副教授能够识别问题的起因，并采取较宏观的途径找寻长远的解决方案。

他同样也关注能直接帮助居民的上游计划。他在社区伙伴及项目相关者的帮助下，引进和支持监狱辅导计划、防嗜毒运动及校园援助计划，带领居民迈向光明的未来。

MENGUBAH KEHIDUPAN DI TENGAH-TENGAH NEE SOON

நீ துன் மையத்தில் வாழ்க்கை உருமாற்றம்



Sebagai Anggota Parlimen bagi Nee Soon GRC untuk penggal yang ketiga, Profesor Madya Muhammad Faishal Ibrahim telah menempuh perjalanan hampir 10 tahun bersama penduduk Nee Soon.

Apabila diminta berkongsi tentang perubahan yang paling ketara dari segi landskap dan masyarakat, beliau menjawab dengan ringkas: transformasi.

Sebelum tahun 2011, Nee Soon belum lagi menjadi GRC. Apabila Prof Madya Faishal baru mula menyertai pasukan Nee Soon GRC, Kelab Masyarakat Nee Soon Central hanya dirumahkan di sebuah kolong. Kini, ia ditempatkan di Northpoint City dan ia merupakan kelab masyarakat yang pertama di Singapura yang terletak di dalam pusat membeli-belah. Projek yang dicadangkan Prof Madya Faishal dengan sokongan pelbagai kementerian dan agensi ini telah membuahkan hasil.

Kampung yang Moden

Transformasi Nee Soon Central didorong oleh visi untuk membangunkan Nee Soon menjadi sebuah bandar moden dan mampan yang menumpukan kepada inklusiviti, pemeraksanaan dan belas kasihan. Dengan kemudahan-kemudahan yang baru dan dinaiktarafkan seperti Hab Pengangkutan Bersepadu Yishun dan Pusat Kemanusiaan Belia Tzu Chi, bandar ini diberikan wajah baru dan ini merangsang semangat kampung dalam masyarakat.

Kelab Masyarakat Nee Soon Central yang merangkumi kemudahan inklusif memenuhi keperluan masyarakat dari pelbagai lapisan hidup dan merupakan manifestasi visi tersebut. Penambahbaikan ini membantu para penduduk tidak kira umur, gaya hidup atau keadaan untuk hidup dengan lebih baik dan meneruskan semangat kampung di Nee Soon.

“Anda bukan sahaja boleh melihat perubahan, tetapi juga boleh merasakannya,” kata Prof Madya Faishal. Semasa tempoh Pemutus Litar, beliau telah menyaksikan ramai penduduk tampil ke depan untuk menyumbangkan pelitup muka, barang-barang makanan dan juga menyediakan perkhidmatan sesama penduduk. “Semangat [kampung] ini akan membolehkan kita melalui apa sahaja, baik sewaktu perayaan mahupun krisis,” tambah beliau.

Mencari Akar Penyebab Masalah

Dengan bantuan ketua-ketua akar umbi, pendekatan yang diambil oleh Prof Madya Faishal iaitu menangani masalah pada peringkat akar umbi bermaksud sebarang masalah dapat diselesaikan dengan cepat dan berkesan. Sistem beliau mudah: memainkan peranan yang aktif di bawah, mengekalkan hubungan dengan orang ramai dan mengurangkan sekatan bagi penduduk yang ingin menghubungi beliau. Selain kerja

kementeriannya, beliau meluangkan masa untuk melibatkan diri dengan penduduk di Nee Soon. Sewaktu pandemik ini, beliau mengatur sesi Facebook Live dengan lebih kerap untuk mengatasi masalah para penduduk dan berinteraksi dengan mereka.

Beberapa tahun yang lalu, Prof Madya Faishal memerhatikan kumpulan orang ramai yang berbeza pada waktu malam. Ia mendorong beliau untuk membuat tinjauan mesra di kedai kopi pada lewat malam kira-kira dua kali seminggu. Para penduduk mengalu-alukan beliau dan sering mengundangnya ke meja mereka. Mereka mengadu kepada beliau tentang masalah-masalah peribadi atau pertikaian sesama jiran. Ini memberikan beliau peluang untuk campur tangan bagi mengatasi masalah tersebut pada peringkat awal.

Beliau menekankan keikhlasan dan ketelusan apabila berkhidmat untuk rakyat. “Saya mahu memberi yang terbaik. Sesetengah masalah sukar diselesaikan dan saya akan memberitahu mereka bahawa ia tidak mudah. Ianya amat penting untuk mempunyai persefahaman bersama – bahawa ada masalah yang lebih kompleks daripada yang lain,” jelas beliau. “Kita membina kepercayaan dalam setempoh masa. Kepercayaan bukan sesuatu yang boleh kita beli; kita perlu memperolehinya,” tambah beliau.

Sebuah Negara Bermula dari Rumah

Selain projek fizikal, Prof Madya Faishal memberikan masa yang banyak kepada orang ramai, terutamanya golongan remaja yang berisiko. Beliau berkata: “Pada tahun 2019, kira-kira 60 peratus daripada pengguna dadah kali pertama dan yang ditahan adalah mereka yang di bawah 30 tahun.”

Beliau percaya bahawa masalah ini boleh diberhentikan pada tahap tunas melalui pembangunan keluarga yang kukuh dan pendidikan. Setelah berkhidmat di Kementerian Pendidikan dan Kementerian Pembangunan Sosial dan Keluarga, pengalaman itu membolehkan beliau mengenal pasti punca masalah dan mengambil pendekatan yang lebih holistik apabila mencari penyelesaian jangka panjang.

Melangkau dasar nasional, beliau juga memberi tumpuan kepada inisiatif hulu yang boleh memanfaatkan para penduduk secara langsung. Dengan bantuan rakan masyarakat dan pihak berkepentingan, beliau telah memperkenalkan dan menyokong program kaunseling penjara, kempen antidadah seperti “Dadah Itu Haram” dan program pengirim ucap selamat, antara lainnya.

நீ துன் குழுத்தொகுதியின் மூன்றாம் தவணைக்கால நாடாளுமன்ற உறுப்பினரான இணைப் பேராசிரியர் முகமது ஃபைஷல் இப்ராஹிம், நீ துன் குடியிருப்பாளர்களுடன் கிட்டத்தட்ட 10 ஆண்டுகளாகச் சேர்ந்து பயணித்திருக்கிறார்.

சுற்றுப்புறத்திலும் சமூகத்திலும் ஏற்பட்ட ஆகப்பெரிய மாற்றம் என்ன என்று கேட்டபோது, அவர் அளித்த சிறிய பதில்: உருமாற்றம்.

2011க்கு முன், நீ துன் ஒரு குழுத்தொகுதியாகவில்லை. இணைப் பேராசிரியர் ஃபைஷல் முதன்முதலில் நாடாளுமன்ற உறுப்பினராகப் பொறுப்பேற்றபோது, நீ துன் சென்ட்ரலில் கட்டடக் கீழ்த்தளச் சமூக மன்றம் மட்டுமே இருந்தது. இன்று, நீ துன் சென்ட்ரல் சமூக மன்றம், நார்த்தாயின்ட் சிட்டியில் அமைந்திருக்கிறது. சிங்கப்பூரிலேயே கடைத்தொகுதியில் அமைந்திருக்கும் முதல் சமூக மன்றம் இது. இணைப் பேராசிரியர் ஃபைஷல் இதற்குப் பரிந்துரை செய்தார். பல்வேறு அமைச்சுகள், அமைப்புகள் ஆகியவற்றின் ஆதரவுடன், அந்தப் பரிந்துரை நிறைவேறியுள்ளது.

நவீன கம்போங்

அரவணைப்பு, ஆற்றல், கருணை ஆகியவற்றுக்கு முக்கியத்துவம் அளிக்கும் நவீன நகரமாக நீ துனை உருவாக்கும் நோக்குடன் நீ துன் சென்ட்ரல் உருமாற்றப்பட்டது. யீஷான் ஒருங்கிணைந்த போக்குவரத்து மையம், ஸூச்சி மனிதநேய இளையர் மையம் போன்ற பற்பல புதிய, மேம்படுத்தப்பட்ட வசதிகள் சேர்க்கப்பட்டன.

இதன்வழி, நகரம் புதுப்பொலிவு பெற்று, சமூகத்தில் கம்போங் உணர்வும் வளர்ந்தது.

பலதரப்பட்ட மக்களுக்கும் உகந்த வசதிகளுடன் அமைக்கப்பட்ட சமூக மன்றம், இந்த நோக்கின் வெளிப்பாடாகத் திகழ்கிறது. வயது, வாழ்க்கைப்பாணி, துழ்நிலைகள் எதையும் பொருட்படுத்தாமல், குடியிருப்பாளர்கள் அனைவரும் மேம்பட்ட வாழ்க்கை வாழவும், நீ துனில் கம்போங் உணர்வைக் கட்டிக்காக்கவும் இந்த மேம்பாடுகள் துணை புரிகின்றன.

“இந்த மாற்றங்களைப் பார்ப்பதோடு மட்டுமன்றி, உங்களால் உணரவும் முடியும்,” என்றார் இணைப் பேராசிரியர் ஃபைஷல். நோய்ப்பரவலை முறியடிப்பதற்கான அதிரடித் திட்டம் நடப்பில் இருந்தபோது, சக குடியிருப்பாளர்களுக்கு முக்கவசங்கள், உணவுப் பொருட்கள் போன்றவற்றை விநியோகிக்கவும், சேவைகள் வழங்கவும் பல குடியிருப்பாளர்கள் முன்வந்ததை அவர் கண்டார். “இந்த (கம்போங்) உணர்வு, கொண்டாட்டங்களிலும் நெருக்கடி காலங்களிலும் நமக்குக் கைகொடுக்கும்,” என்றும் அவர் கூறினார்.

அடிப்படைக் காரணங்களைக் கண்டறிந்து உதவி புரியும் அணுகுமுறை

இணைப் பேராசிரியர் ஃபைஷல், அடித்தளத் தலைவர்களின் உதவியுடன், அடித்தள அணுகுமுறையைக் கையாள்வதால், பிரச்சனைகள் விரைவாகவும் செயல்திறனோடும் தீர்க்கப்படுகின்றன. அவர் எளிய செயல்முறையைக் கையாளுகிறார்: அடித்தளத்தில் முனைப்புடன் செயல்படுத்தல், மக்களுடன் தொடர்பிலிருத்தல் , தன்னை அணுக விரும்பும் குடியிருப்பாளர்களுக்கு எந்தவிதத் தடங்கலும் இல்லாமல் பார்த்துக் கொள்ளுதல். அமைச்சர்நிலைப் பணிக்கு அப்பால், நீ துனில் அடித்தள நடவடிக்கைகளுக்குத் தமது நேரத்தைச் செலவிடுகிறார் இணைப் பேராசிரியர் ஃபைஷல். தற்போதைய கிருமிப்பரவல் சூழலில், குடியிருப்பாளர்களுடன் கலந்துறவாடி அவர்களது கவலைகளைப் போக்க, ஃபேஸ்புக் நேரலை அங்கங்களை அடிக்கடி நடத்தி வருகிறார்.

இணைப் பேராசிரியர் ஃபைஷல் சில ஆண்டுகளுக்கு முன், இரவில் வித்தியாசமான கூட்டத்தைக் கவனித்தார். இதனால், வாரத்தில் இருமுறை பின்னிரவு நேரத்தில் காப்பிக் கடைகளுக்கு வருகையளிக்கத் தொடங்கினார். குடியிருப்பாளர்கள் அவரை மனதார வரவேற்று, தங்களுடன் அமரவும் அழைத்தனர். அவர்கள் தங்களது தனிப்பட்ட பிரச்சனைகளை அல்லது அண்டைவீட்டாருடனான பூசல்களை அவருடன் பகிர்ந்து கொண்டனர். இதன்வழி, இணைப் பேராசிரியர் ஃபைஷல் ஆரம்பக் கட்டத்திலேயே குறுக்கிட்டு, பிரச்சனைகளுக்குத் தீர்வுகாண முடிந்தது.

மக்களுக்குச் சேவை செய்யும்போது உண்மையாகவும் வெளிப்படையாகவும் இருப்பது முக்கியம் என அவர் வலியுறுத்துகிறார். “என்னால் முடிந்தவரை சிறந்த சேவை செய்ய விரும்புகிறேன். சில விவகாரங்கள் சிரமமானவை. அவற்றுக்குத் தீர்வு காண்பது அவ்வளவு சுலபமல்ல என்று அவர்களிடம் எடுத்துச் சொல்வேன். பரஸ்பரப் புரிந்துணர்வு முக்கியம் - சில விஷயங்கள் மற்றவற்றைவிட அதிக சிக்கலானவை,” என்று இணைப் பேராசிரியர் ஃபைஷல் விளக்கினார். “காலப்போக்கில் எங்களுக்கு இடையில் நம்பிக்கை வளர்ந்தது. நம்பிக்கையை விலைகொடுத்து வாங்க முடியாது; அதைச் சம்பாதிக்க வேண்டும்,” என்றும் அவர் குறிப்பிட்டார்.

இல்லமே தேசத்தின் அடிக்கல்

வசதிகளை அமைத்துத் தருவதோடு, மக்களின், அதுவும் குறிப்பாக, எளிதில் பாதிப்புக்கு உள்ளாகக்கூடிய இளையர்களின் நலனிலும் இணைப் பேராசிரியர் ஃபைஷல் மிகுந்த அக்கறை கொண்டுள்ளார். “2019-ல் கைதான முதல்முறை போதைப்புழங்கிகளில் சுமார் 60 விழுக்காட்டினர் 30 வயதுக்கும் குறைவானோர்,” என அவர் தெரிவித்தார்.

இந்தப் பிரச்சனையை முளையிலேயே தடுப்பதற்கு வலுவான குடும்ப மேம்பாடும் கல்வியும் துணைபுரியும் என அவர் நம்புகிறார். கல்வி அமைச்சிலும், சமுதாய, குடும்ப மேம்பாட்டு அமைச்சிலும் பணியாற்றிய அனுபவத்துடன், அடிப்படைக் காரணங்களை அவர் அடையாளம் கண்டு, நீண்டகாலத் தீர்வுகளை வகுக்க முழுமையான அணுகுமுறையைக் கையாளுகிறார்.

தேசிய கொள்கைகளுக்கு அப்பால், குடியிருப்பாளர்களுக்கு நேரடியாக நன்மையளிக்கும் திட்டங்களிலும் அவர் கவனம் செலுத்துகிறார். சமூகப் பங்காளிகள், பங்களிப்பாளர்கள் ஆகியோரின் உதவியுடன், சிறைச்சாலை ஆலோசனைத் திட்டங்கள், “டாடா இத்து ஹராம்” போன்ற போதைப்பொருள் தடுப்புத் திட்டங்கள், நலன் விரும்பிகள் திட்டம் போன்ற அறிமுகப்படுத்த உதவி புரிந்து, ஆதரவளிக்கிறார்.